

Black Light Lamps These lamps are not intended and should not be used for therapeutic or diagnostic purposes.

Product Number	Ordering Code	Nominal Lamp Watts	Description	Nominal Length (In.)	Bulb	Base	Average Life (Hrs.) ¹	UVA Watts	Fig. No.
35840-8	F4T5/BLB	4	Black Light-Integral Filter	6	T5	Min. Bipin	6000	0.5	11-S
35841-6	F6T5/BLB	6	Black Light-Integral Filter	9	T5	Min. Bipin	7500	0.9	11-S
11065-0	F8T5/BLB	8	Black Light-Integral Filter	12	T5	Min. Bipin	7500	1.2	11-S
31006-0	PL9W/10	9	Black Light	6 ½	PL-S	G23	10,000	1.9	16-S
20678-9	PL9W/08	9	Black Light-Integral Filter	6 ½	PL-S	G23	10,000	1.7	16-S
13036-9	F15T8/BL	15	Black Light	18	T8	Med. Bipin	7500	3.1	10-S
29271-4	F15T8/BLB	15	Black Light-Integral Filter	18	T8	Med. Bipin	7500	3.1	10-S
39151-6	F20T12/BLB	20	Black Light-Integral Filter	24	T12	Med. Bipin	9000	3.7	9-S
39152-4	F20BL	20	Black Light	24	T12	Med. Bipin	9000	3.7	9-S
26271-7	F30T8/BLB	30	Black Light-Integral Filter	36	T8	Med. Bipin	7500	6	10-S
39153-2	F40BL	40	Black Light	48	T12	Med. Bipin		9	9-S
39053-4	F40BLB	40	Black Light-Integral Filter	48	T12	Med. Bipin	20,000	9	9-S

1) Three or more hours per start.

Special Blue (Therapeutic) Lamps T12 Bipin

Product Number	Ordering Code	Nominal Lamp Watts	Description	Nominal Length (In.)	Average Life (Hrs.)	Approx. Initial Lumens	Design Lumens
31745-3	F20T12/BB	20	Special Blue	24	9000	200	180
20189-7	F40/BB	40	Special Blue	48	20,000	500	385

NOTE: Black Light and Special Blue Lamps are not designed for general illumination.

WARNING: Ultraviolet Radiation

Wear protective eyewear in occupational situations and in close proximity to these lamps. Failure to may result in severe burns and long-term injury to the eyes. Certain medications and chemicals may increase your sensitivity to ultraviolet radiation. Consult your physician. These lamps can be harmful to skin and eyes in situations where people are exposed for extended periods of time. Unshielded lamps should be installed at least 40 inches from people.

Germicidal Sterilamp® Tubes

Product Number	Description	Lamp Wattage ¹	UV-C Watts ²	Bulb	Base	Useful Life Hours ³	Nominal Length (In.)	Fig. No.
Hot Cathode								
36371-3	TUV4T5	4	0.9	T5	Min. Bipin	6000	6	12-S
24485-5	TUV6T5	6	1.5	T5	G5	8000	9	12-S
29930-5	TUV8T5	8	2.1	T5	Min. Bipin	8000	12 ⁴	12-S
30864-3	TUV15T8	15	4.7	T8	Med. Bipin	8000	18 ⁴	12-S
29268-0	TUV25T8	25	7	T8	Med. Bipin	8000	18 ⁴	12-S
36016-4	TUV30T8	30	11.2	T8	Med. Bipin	8000	36 ⁴	12-S
26269-1	TUV36W	36	15.3	T8	Med. Bipin	8000	48 ⁴	12-S
29090-8	TUV75WHO	75	26	T12	Med. Bipin	8000	48 ⁴	12-S
23596-0	TUV115W	115	38.8	T12	Med. Bipin	5000	48 ⁴	12-S
38186-3	TUV PL-S 5	5	0.18	PL-S	G23	8000	4	16-S
32512-6	PL-S9W/TUV	9	2.4	PL-S	G23	9000	6 ½	16-S
21064-1	PL-L18W/TUV	18	5.5	PL-L	2G11	9000	8 ½	15-S
13726-5	PL-L35W/TUV	35	11.0	PL-L	2G11	9000	8 ½	15-S
26585-0	PL-L36W/TUV	36	12	PL-L	2G11	9000	16 ¾	15-S
29464-5	PL-L55W/TUV	55	17	PL-L	2G11	9000	22 ½	15-S
13035-1	PL-L60W/TUV	60	17.5	PL-L	2G11	9000	16 ¾	15-S
13725-7	PL-L95W/TUV	95	32.0	PL-L	2G11	9000	22 ½	15-S
Slimline								
38542-7	TUV 11W	11	2.2	T5	2G11	8000	10	14-S
38541-9	TUV 16W	16	3.9	T5	2G11	8000	13	14-S
13341-3	TUV 25W	25		T5	4-Pin		20	14-S
29267-2	TUV36T5/SP	39 ⁵	15	T5	Single Pin	9000	34	13-S
36209-5	TUV36T5 4P SE	39 ⁵	15	T5	2G11	9000	34	14-S
29269-8	TUV64T5/SP	75	31	T5	Single Pin	9000	62	13-S
36217-8	TUV64T5 4P SE	75	31	T5	2G11	9000	62	14-S
13389-2	TUV36T5 HO 4P SE	75		T5	4-Pin	9000	34	14-S

1) Wattages shown are for operation from a transformer or ballast, currently standard, under specified test conditions.

2) 100 Hour

3) Lamp Life @ 85% UV-C Maintenance

4) Approximate overall length including two standard lamp holders.

5) Wattage shown is for lamp operating current of 420 ma.

Wattage will vary at other operating currents as follows:

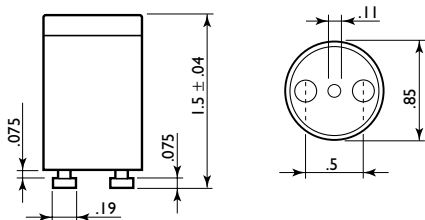
120 ma. — 17 watts; 200 ma. — 25 watts; 300 ma. — 32 watts.

For the most current product information, go to www.nam.lighting.philips.com/us/ecatalog/

Starters

Product Number	Description	Circuit	Standard Package Quantity	Fluorescent Lamps
33118-1	S10 STARTER 25PK	Single 220-240V	25	4-85W
13367-2	Cleo Power Starter	Single 220-240V	500	100/180W

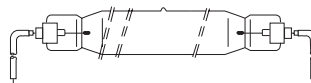
For the most current product information, go to www.nam.lighting.philips.com/us/catalog/



Specialty Bulb Shapes (Not Actual Sizes)



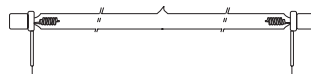
HPM 10/B, 13, 19, 20
Fig. 1-S



HPM 12, 14, 15, 17, 19, 20C,
Fig. 2-S



HPA 400S
Fig. 3-S



XOP 7, 15, 25, O/F
Fig. 8-S



T12 Medium Bipin
Figure 9-S



T8 Medium Bipin
Figure 10-S



T5 Miniature Bipin
Figure 11-S



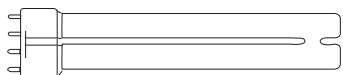
Hot Cathode Sterilamp
Figure 12-S



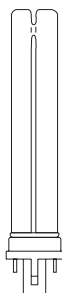
Cold Cathode and Slimline Sterilamp
Figure 13-S



Slimline Sterilamp
Figure 14-S



PL-L
Figure 15-S



PL-S
Figure 16-S